

# RAINTREE OFFICE PARK

9324 East Raintree Drive, Suite 100-B | Scottsdale, Arizona



## PROFESSIONAL OFFICE CONDO FOR LEASE

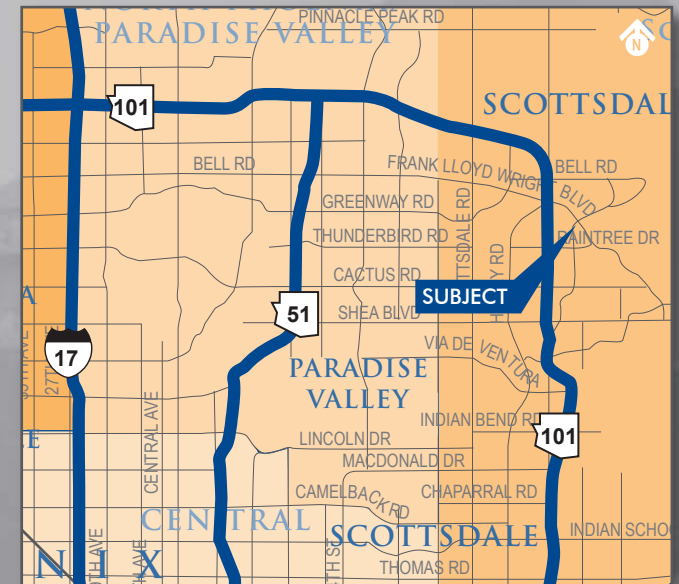
AVAILABLE: ±1,090 SF

LEASE RATE: \$2,350/month

PARKING RATIO: 4:1,000

COVERED PARKING: 1 Covered parking space available

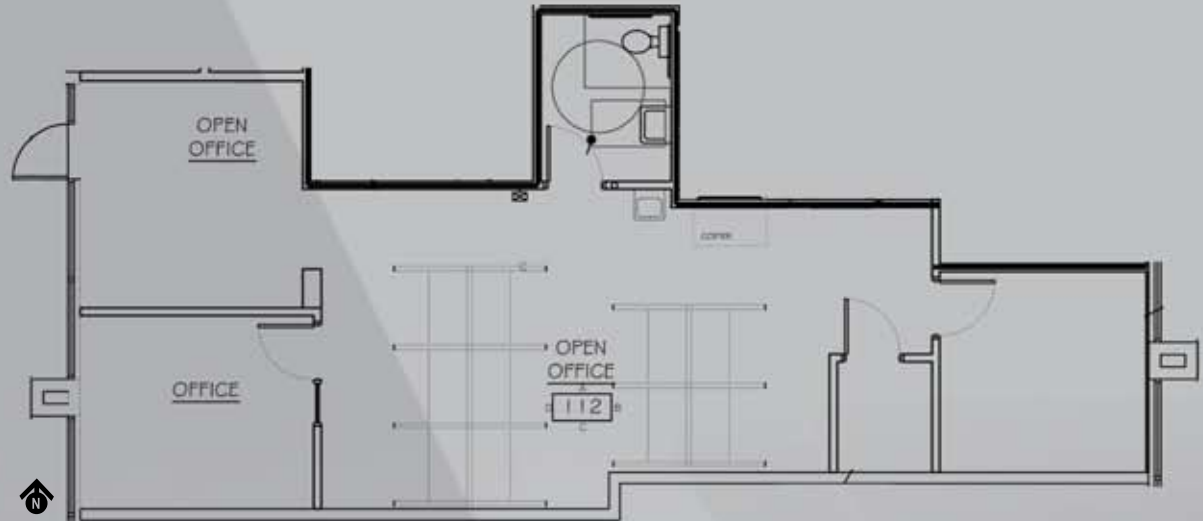
SIGNAGE: Window signage available



**LOGAN**  
COMMERCIAL ADVISORS

480.860.6900 T  
logancommercial.com

# RAINTREE OFFICE PARK



## SUITE HIGHLIGHTS

The suite is a fully built-out office space with 2 offices, open 'sales pen', private restroom, supply room and reception area. It also has client parking at your door and excellent mountain views.

## AREA HIGHLIGHTS

- Great freeway access to the Loop 101
- Ideal Scottsdale location
- Variety of retail and restaurant amenities including Kierland Commons, One Scottsdale, City North and Scottsdale Promenade

For more information contact:

**ERIC BUTLER**

480.776.0603

[ebutler@logancommercial.com](mailto:ebutler@logancommercial.com)

Proudly marketed by:



480.860.6900 T | 480.860.6904 F

9320 East Raintree Drive | Suite 100

Scottsdale, Arizona 85260

[logancommercial.com](http://logancommercial.com)