

SCOTTSDALE RIDGE

7328 East Deer Valley Road, I-105 | Scottsdale, Arizona



OFFICE CONDOMINIUM FOR SALE OR LEASE

AVAILABILITY: ±2,663 SF
SALE PRICE: \$210 PSF
PARKING RATIO: 5:1,000 SF; Covered - 1:1,000 SF
ZONING: C-O

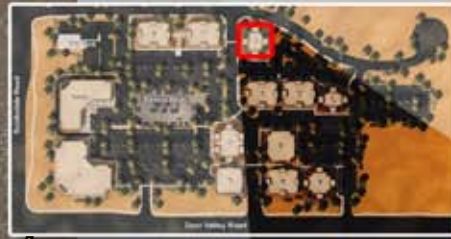
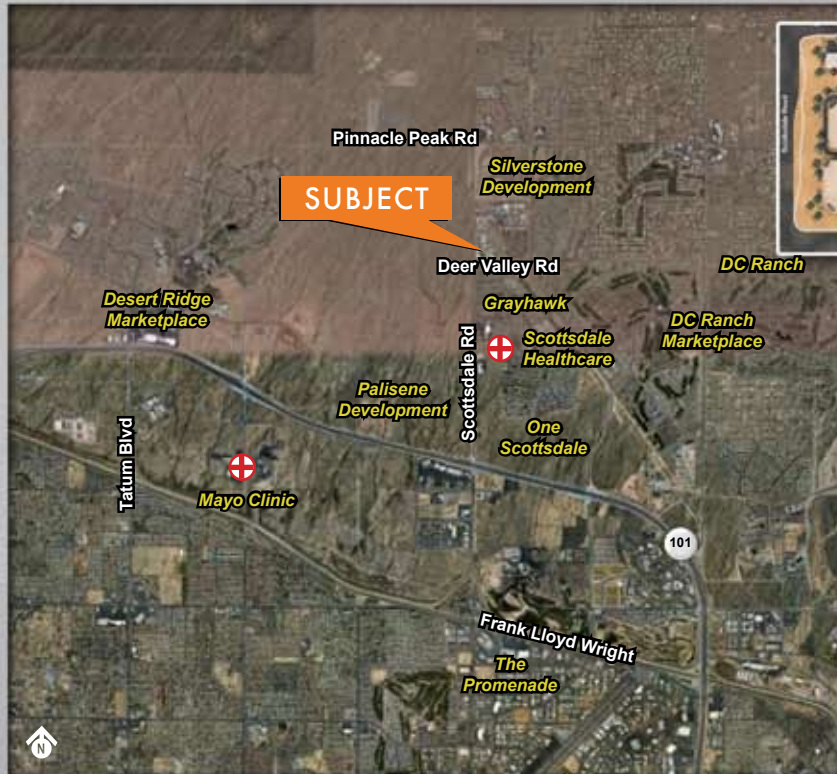
BUILDING FEATURES:

- Building signage available
- Reinforced concrete slab and plumbing stubbed to suite
- Garden-style building with masonry, sandstone and slate veneer

LOGAN
COMMERCIAL ADVISORS
480.860.6900 T
logancommercial.com



SCOTTSDALE RIDGE



AREA HIGHLIGHTS:

- Great access to the Loop 101
- Minutes from Scottsdale Healthcare Hospital
- Located near numerous master-planned communities: Grayhawk, DC Ranch and the future Silverstone Development
- Retail projects on-site and close to One Scottsdale and the future Palisene Development

DEMOGRAPHICS:

	1 Mile	3 Miles	5 Miles
Household Income	\$125,444	\$130,056	\$110,613

Source: 2008 Claritas, Inc

TRAFFIC COUNT:

Scottsdale Road	38,000 VPD
-----------------	------------

Source: City of Scottsdale 2006

For more information contact:

ROSS GUTTLER

480.776.0620

rguttler@logancommercial.com



480.860.6900 T | 480.860.6904 F
9320 East Raintree Drive
Scottsdale, Arizona 85260
logancommercial.com